

Jacqueline M

Height
5'7.7" - 172 cm

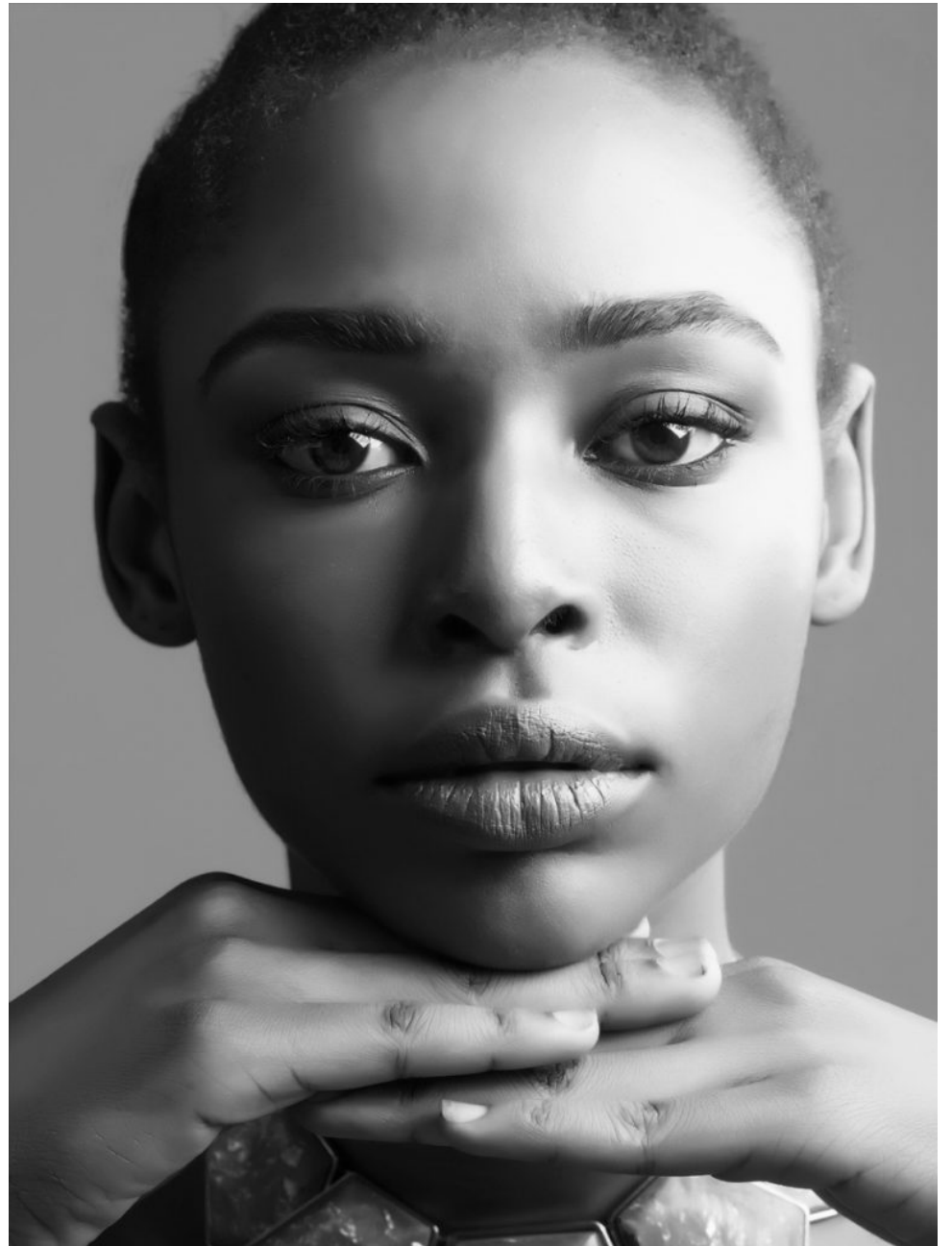
Bust
31" - 79 cm

Waist
25" - 63 cm

Hips
32" - 81 cm

Dress
6 - 8

Shoe
7-8





Jacqueline M

Height:5'7.7" - 172 cm Bust :31" - 79 cm Waist :25" - 63 cm Hips :32" - 81 cm Dress :6 - 8 Shoe :7- 8



Jacqueline M

Height:5'7.7" - 172 cm Bust :31" - 79 cm Waist :25" - 63 cm Hips :32" - 81 cm Dress :6 - 8 Shoe :7- 8